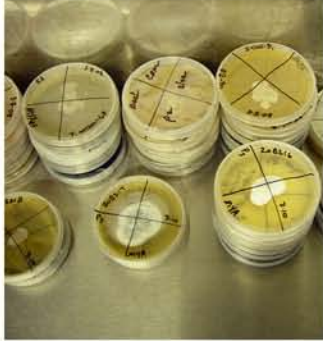




Technical



We are often asked “How are medicinal mushrooms grown?” This is a highly technical branch of the biotech industry known as ‘Sterile Tissue Culture’. Aloha Medicinals is the world’s leader in mushroom solid state fermentation. A brief outline is shown here.



1. Genetically pure cultures



2. Transferring culture to inoculum



3. Sterilized substrate cooling in sterile air



4. Inoculating substrate



5. All work done in sterile air hoods



6. Hermetically sealing grow bags



7. Growing in Sterile environment



8. Ready to harvest



9. Quality control and further processing

Further processing can take many forms, and depends on the customer’s requirements. What can we make for you?

Aloha Medicinals Inc.
2300 Arrowhead Dr. Carson City, NV 89706

www.alohamedicinals.com
Tel: 001 775.886.6300