



**Product Name: *Pure Cordyceps*™**  
Full Spectrum MycoProduct Î

Protected by U.S. Patents  
8008060 and 7407795

Throughout history *Cordyceps sinensis* has been the single most expensive medicinal raw material in the world! Now that situation has changed. With Aloha Medicinals perfection of the biotechnology of Cordyceps cultivation, ðCertified Authenticö Cordyceps is available at a price everyone can afford. In nature, this medicinal mushroom is found only in the Himalayas above 14,000 feet elevation (4200 meters!) After many years of research, Aloha Medicinals is the first company in the world to perfect growing Cordyceps in artificial cultivation. In fact, Aloha Medicinals is recognized today as the worldø leading expert in cultivating Cordyceps, as proven by the choice of Aloha Medicinals as the authors of the ðCordycepsö chapter for the *Encyclopedia of Dietary Supplements*, the standard reference used by regulatory agencies worldwide. In addition, it was Aloha Medicinals that wrote the standards for the testing and analysis of Cordyceps, as published in the *International Journal of Medicinal Mushrooms*, spring 2004 edition. There is no higher quality or consistent Cordyceps available anywhere!

**Aloha Medicinals Cordyceps is the only Bio-Identical Cordyceps grown in patented low oxygen, low temperature conditions, just like nature! And Aloha Medicinals is the only Cordyceps that is “Certified Genetically Authentic” through independent third-party DNA testing and Verified through the National Institute of Health genebank.**

Guaranteed 100% DNA-Certified through Independent testing to be authentic Cordyceps, not some ðClosely Relatedö species as with other brands !

Guaranteed 100% USDA Certified Organic !

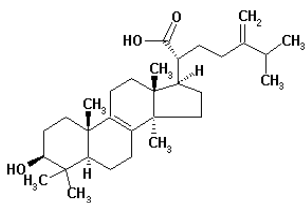
Guaranteed 100% Vegetarian ó No Insect Residue used in cultivation as is common in China !

Guaranteed to be the Most Potent Cordyceps Available Today ó 5 times the potency of Wild Collected variety !

Guaranteed to be derived directly from Tibetan strains.

Guaranteed to be 100% American Grown in FDA registered biotech facility !

**Simply the Best Cordyceps Available Today ! Guaranteed !**  
**Full Spectrum Mycoproduct and various extracts available**



**Aloha Medicinals Inc.**

2300 Arrowhead Dr.  
Carson City, NV 89706  
Tel (775) 886-6300

Email: [sales@alohamedicinals.com](mailto:sales@alohamedicinals.com)



## Product Name: *Pure Cordyceps*

ITEM	SPECIFICATION	TEST METHOD
<b>Identification</b>	Match NIH - NCBI Genebank data	Genetic Testing through DNA BLAST
<b>Purity Tests</b>		Cordycepin and nucleoside analysis performed by HPLC method of Furuya, et.al. <i>Studies On The Metabolites Of Higher Fungi</i> published in <i>Phytochemistry</i> 22 (11): 2509-2512 1983;
Total Plate Count:	< 1000 cfu / gram	
Yeast and Mold:	< 25 cfu / gram	
Total Coliform Bacteria:	Negative	
E. coli	Negative	
Salmonella:	Negative	
Staph Aureus:	Negative	
Pseudomonas:	Negative	
Heavy Metals:	< 10 ppm	Heavy Metals analyzed by a Perkin-Elmer HPLC apparatus using the technique called TotalQuant II
Total Polysaccharide Content:	> 40.0 %	
Total HEAA / Nucleoside content	> 1.00 %	
Cordycepin	> 0.03%	Other tests performed as Standard methods of analysis for Hygienic Chemists
<b>Loss on Drying</b>	not more than 7.0 %	10 grams 105 degrees C for 1 hr
<b>Ash</b>	Not more than 1.0 %	Standard methods of analysis for Hygienic Chemists
<b>Appearance</b>	Granular powder, beige in color	Visual
<b>Odor</b>	Characteristics	Subjective bioassay
<b>Other Ingredients</b>	none	-
<b>Particle Grind Size</b>	From nano size up to 80 mesh	As specified by customer

### Species Level Identification - *Cordyceps sinensis*

Aloha Medicinals Cordyceps sinensis strain CSS is 100% genetic match with NCBI genebank entry Accession AY 245638.1 - Cordyceps sinensis strain CCRC36421 - ITS1 18S ribosomal RNA gene

Accession Description	Max score	Total score	Query coverage	E value	Max ident
Cordyceps sinensis strain CCRC36421 18S ribosomal RNA gene, partial sequence; internal transcribed spacer 1, 5.8S ribosomal RNA gene and internal transcribed spacer 2, complete sequence; and 28S ribosomal RNA gene, partial sequence	627	627	100%	2e-176	100%

### Alignments

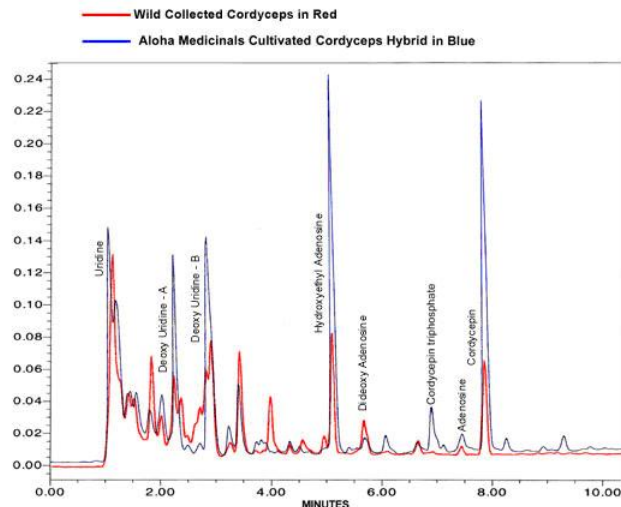
Select All Get selected sequences Distance tree of results Multiple alignment

Score = 627 bits (339), Expect = 2e-176  
Identities = 339/339 (100%), Gaps = 0/339 (0%)  
Strands:Plus/Plus

Query 1	GCATCGATGAAGAAGCGGACGAAATGCGATAAGTAATGTGAATTCGAGAATTCAGTGAAT	60
Sbjct 218	GCATCGATGAAGAAGCGGACGAAATGCGATAAGTAATGTGAATTCGAGAATTCAGTGAAT	277
Query 61	CATCGAATCTTTGACGACACATTGGCCCGCCAGTATTCTGGCGGGCATGCCGTTCGAG	120
Sbjct 278	CATCGAATCTTTGACGACACATTGGCCCGCCAGTATTCTGGCGGGCATGCCGTTCGAG	337
Query 121	CGTCATTTCAACCCCTCAAGCCCGAGCGGCTTGGTGTGGGACCGGCCCGCCGCCCGCC	180
Sbjct 338	CGTCATTTCAACCCCTCAAGCCCGAGCGGCTTGGTGTGGGACCGGCCCGCCGCCCGCC	397
Query 181	CAATGCAAGTGGGACCTCGCCGACGCTCCCTGCGTAGTACACAACCTGCACCGGAG	240
Sbjct 398	CAATGCAAGTGGGACCTCGCCGACGCTCCCTGCGTAGTACACAACCTGCACCGGAG	457
Query 241	CGCGGAGCGGTACCGCTTAAACGCCCAACTTCTCAGAGTTGACCTCGGATCAGGTAG	300
Sbjct 458	CGCGGAGCGGTACCGCTTAAACGCCCAACTTCTCAGAGTTGACCTCGGATCAGGTAG	517
Query 301	GAATACCGCTGAACCTAAGCATATCAATAAGCGGAGGA	339
Sbjct 518	GAATACCGCTGAACCTAAGCATATCAATAAGCGGAGGA	556

Typical DNA Identification as supplied with each lot

### COMPARISON OF ALOHA MEDICINALS HYBRID CORDYCEPS TO WILD CORDYCEPS BY HPLC ANALYSIS



Typical Potency Comparison with Wild Cordyceps

Analyte	Result	Unit
Cordycepin (mw 251.24)	0.0309	% wt
Adenosine (mw 264.24)	0.9989	% wt
Ethyl-Adenosine (mw 295.12)	0.0188	% wt
Hydroxyethyl-adenosine (mw 311.12)	0.0416	% wt
Polysacchrides	40.76	% wt

Typical Chemical Analysis