



**Product Name: *Maitake***

*Also known as*

***Grifola frondosa***

Available as Full Spectrum MycoProduct™ and Concentrated 8:1 and 16:1 purified & standardized extract

Now Available in Nano Formulation !

***NanoMaitake™***

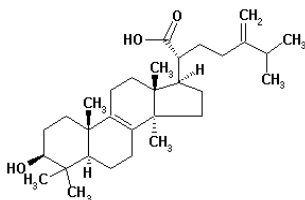
U.S. and International Patents Protection

***Grifola frondosa***, which is commonly known as **Maitake** is a well known and widely studied medicinal mushroom. It is used commonly in Traditional Chinese Medicine as an immune enhancer and anti-tumor component. It is most widely known by its Japanese name, Maitake, or the “Dancing Mushroom” It is said that a find of Maitake would make the foragers so happy they would Dance for Joy!

Much work has been done in studying Maitake’s immune potentiating effects, primarily in Japan and China. In 1988, Dr. Nanba in Japan discovered a particular component in Maitake known as Maitake D-Fraction, which is widely used in the Orient as an adjunct to conventional cancer therapies. This is produced as a prescription drug in China under the name Bao Li Sheng. Maitake is one of the most popular immune enhancers used throughout Asia today.

- Guaranteed 100% DNA Certified through Independent testing to be authentic *Grifola frondosa*, not some “Closely Related” species as with other brands !
- Guaranteed 100% USDA Certified Organic !
- Guaranteed 100% Vegetarian – Grown under Strict Laboratory Conditions !
- Guaranteed to be derived directly from native Oriental strains.
- Guaranteed to be 100% American Grown in FDA registered biotech facility !

**”Guaranteed Authentic” *Grifola frondosa* – Now grown in America !**  
**Full Spectrum Mycoproduct and various extracts available**



**Aloha Medicinals Inc.**

2300 Arrowhead Dr.  
Carson City, NV 89706  
Tel (775) 886-6300

Email: [sales@alohamedicinals.com](mailto:sales@alohamedicinals.com)



**Product Name : *Grifola frondosa - Maitake***

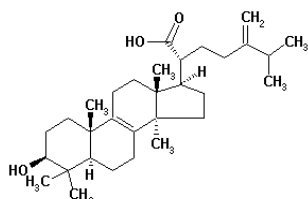
ITEM	SPECIFICATION	TEST METHOD
<b>Identification</b>	Match NIH - NCBI Genebank data	Genetic Testing through DNA BLAST
<b>Purity Tests</b>		
Total Plate Count:	< 1000 cfu / gram	Heavy Metals analyzed by a Perkin-Elmer HPLC apparatus using the technique called TotalQuant II
Yeast and Mold:	< 25 cfu / gram	Polysaccharides analyzed by modified Megazyme test method for 1,3-1,6 beta glucans and other polysaccharides
Total Coliform Bacteria:	Negative	Other tests performed as Standard methods of analysis for Hygienic Chemists
E. coli	Negative	
Salmonella:	Negative	
Staph Aureus:	Negative	
Pseudomonas:	Negative	
Heavy Metals:	< 10 ppm	
Total Polysaccharide Content:	> 30 %	
<b>Loss on Drying</b>	not more than 7.0 %	10 grams 105 degrees C for 1 hr
<b>Ash</b>	Not more than 1.0 %	Standard methods of analysis for Hygienic Chemists
<b>Appearance</b>	Granular powder, beige in color	Visual
<b>Odor</b>	Characteristics	Subjective bioassay
<b>Other Ingredients</b>	none	-
<b>Particle Grind Size</b>	From one nano meter up to 80 mesh	As specified by customer

**Typical Uses for Maitake:**

- Used alone or as a component in Immune Enhancing Formula
- Used in soluble form as an additive for health drinks
- Popular as an ingredient in general health formulas
- Used in blood sugar maintenance formulas

**Up until now, most Maitake came from Japan and China. Now you can source your Maitake from the Largest, Most Reliable American supplier!**

**If you need 1 kilogram or 100 tons, We are your stocking source !**



**Aloha Medicinals Inc.**

2300 Arrowhead Dr.  
Carson City, NV 89706  
Tel (775) 886-6300

Email: sales@alohamedicinals.com

